

HSL-DI32-M-N/-P, HSL-DO32-M-N/-P

32-CH Discrete Input Module



Specifications

Slave ID Consumption	2 consecutive from odd
Photo Couple Isolation Voltage	2500 V_{rms}
LED Indicator	Power, Link and Input status
Power Supply	22V to 26V _{dc}
Operating Temperature	0 to 60 °C
Storage Temperature	-20 to +80 °C
Power Consumption	1.8 W
CE Certificate	Ready
HSL-DI32-M-N-P	
Interface	N: for NPN sinking type sensor input or dry contact P: for PNP sourcing type sensor input or wet contact
Input Impedance	4.7 K Ω
Input Current	± 10 mA(Max), ± 12.5 mA(Peak)
Input Voltage	± 40 V (Max)
HSL-DO32-M-N-P	
Response Time	ON \rightarrow OFF: 180 μ s, OFF \rightarrow ON : 1.2 μ s
Interface	N: for NPN sinking type output P: for PNP sourcing type output
Switch Capacity	Single channel 500 mA Full channels 50mA at 100% duty cycle

HSL-DI16DO16-M-NN/-NP/-PN/-PP

16-CH Discrete Input 16-CH Discrete Output Module



Specifications

Slave ID Consumption	1
Interface	NN: for NPN sinking type sensor input or dry contact and NPN sinking type output NP: for NPN sinking type sensor input or dry contact and PNP sourcing type output PN: for PNP sourcing type sensor input or wet contact and NPN sinking type output PP: for PNP sourcing type sensor input or wet contact and PNP sourcing type output
Photo Couple Isolation Voltage	2500 V_{rms}
Input Impedance	4.7 K Ω
Input Current	± 10 mA (max.), ± 12.5 mA (Peak)
Input Voltage	± 40 V (max.)
Output Switching Capacity	Single channel 400 mA Full channels 50 mA at 100% duty cycle
Output Response Time	ON \rightarrow OFF: 180 μ s, OFF \rightarrow ON: 1.2 μ s
LED Indicator	Power, Link and I/O status
Power Supply	22V to 26V _{dc}
Operating Temperature	0 to 60 °C
Storage Temperature	-20 to +80 °C
Power Consumption	1.8 W
CE Certificate	Ready

HSL-R8DI16-M-N/-P

8-CH Relay Output 16-CH Discrete Input Module



Specifications

Slave ID Consumption	1
Interface	N: for NPN sinking type sensor or dry contact P: for PNP sourcing type sensor input or wet contact
Photo Couple Isolation Voltage	2500 V_{rms}
Input Impedance	4.7 K Ω
Input Current	± 10 mA (max.), ± 12.5 mA (Peak)
Input Voltage	± 40 V (max.)
Relay Rating	30V _{dc} 2A, 250V _{ac} 2A
Relay Switching Frequency	(max.) 20 times/minute at rating load
Relay Response Time	ON \rightarrow OFF: 3 ms (max.), OFF \rightarrow ON: 6 ms (max.)
Nominal Voltage for Relay	24 V _{dc}
Input Impedance	4.7 K Ω
Power Supply	22V to 26V _{dc}
Operating Temperature	0 to 60 °C
Storage Temperature	-20 to +80 °C
Power Consumption	1.8 W
CE Certificate	Ready

HSL-AI16AO2-M-VV/-AV

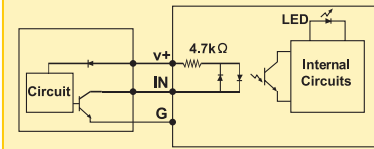
16-CH Analog Input 2 Analog Output Module



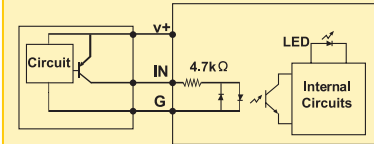
Specifications

Slave ID Consumption	2
Interface	16-CH single-ended or 8-CH differential analog input 2-CH single-ended analog output
AD Resolution	16-bit (14-bit guarantee)
DA Resolution	16-bit
AD Voltage input Range	± 10 V, ± 5 V, ± 2.5 V, ± 1.25 V
AD Current input Range	± 20 mA
DA Voltage output Range	± 10 V
AD Conversion Time	10 μ s
DA Settling Time	10 μ s
Over-voltage Protection	± 30 V
LED Indicator	Power and Link
Power Supply	22 V to 26 V _{dc}
Operating Temperature	0 to 60 °C
Storage Temperature	20 to 80 °C
Power Consumption	2.9 W

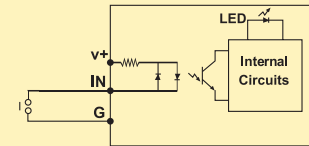
NPN Sinking type sensor Input



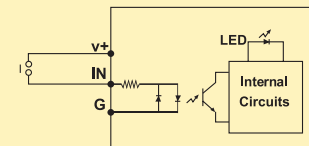
PNP Sourcing Type Sensor Input



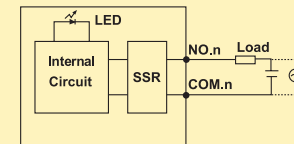
Dry Contact Input



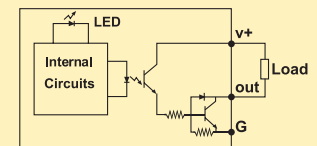
Wet Contact Input



Relay Output



NPN Sinking Output



PNP Sourcing Output

