

## HSL-DI32-M-N/-P

### 32-CH Discrete Input Module



#### Specifications

Slave ID consumption	2 consecutive from odd
Interface	N: for NPN sinking type sensor input or dry contact P: for PNP sourcing type sensor input or wet contact
Photo couple isolation voltage	2500V <sub>rms</sub>
Input impedance	4.7K $\Omega$
Input current	$\pm 10\text{mA(Max)}$ , $\pm 12.5\text{mA(Peak)}$
Input voltage	$\pm 40\text{V (Max)}$
LED Indicator	Power, Link and Input status
Power Supply	22V to 26V <sub>DC</sub>
Operating Temperature	0 to 60°C
Storage Temperature	-20 to 80°C
Power Consumption	1.8W
CE certificate	Ready

## HSL-DO32-M-N/-P

### 32-CH Discrete Output Module



#### Specifications

Slave ID consumption	2 consecutive from odd
Interface	N: for NPN sinking type output P: for PNP sourcing type output
Switch capacity	Single channel 500mA; Full channels 50mA at 100% duty cycle
Photo couple isolation voltage	2500V <sub>rms</sub>
Response time	ON $\rightarrow$ OFF: 180 $\mu\text{s}$ , OFF $\rightarrow$ ON: 1.2 $\mu\text{s}$
LED indicator	Power, Link and Output status
Power supply	22V to 26V <sub>DC</sub>
Operating temperature	0 to 60°C
Storage temperature	-20 to 80°C
Power consumption	1.8W
CE certificate	Ready

## HSL-DI16DO16-M-NN/-NP/-PN/-PP

### 16-CH Discrete Input 16-CH Discrete Output Module



#### Specifications

Slave ID consumption	1
Interface	NN: for NPN sinking type sensor input or dry contact and NPN sinking type output NP: for NPN sinking type sensor input or dry contact and PNP sourcing type output PN: for PNP sourcing type sensor input or wet contact and NPN sinking type output PP: for PNP sourcing type sensor input or wet contact and PNP sourcing type output
Photo couple isolation voltage	2500V <sub>rms</sub>
Input impedance	4.7K $\Omega$
Input current	$\pm 10\text{mA(Max)}$ , $\pm 12.5\text{mA(Peak)}$
Input voltage	$\pm 40\text{V (Max)}$
Output switching capacity	Single channel 500mA; Full channels 50mA at 100% duty cycle
Output response time	ON $\rightarrow$ OFF: 180 $\mu\text{s}$ , OFF $\rightarrow$ ON: 1.2 $\mu\text{s}$
LED indicator	Power, Link and I/O status
Power supply	22V to 26V <sub>DC</sub>
Operating temperature	0 to 60°C
Storage temperature	-20 to 80°C
Power consumption	1.8W
CE certificate	Ready

## HSL-R8DI16-M-N/-P

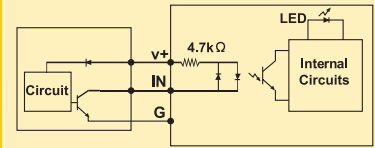
### 8-CH Relay Output 16-CH Discrete Input Module



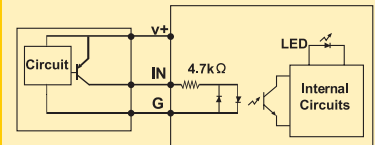
#### Specifications

Slave ID consumption	1
Interface	N: for NPN sinking type sensor or dry contact P: for PNP sourcing type sensor input or wet contact
Photo couple isolation voltage	2500V <sub>rms</sub>
Input impedance	4.7K $\Omega$
Input current	$\pm 10\text{mA(Max)}$ , $\pm 12.5\text{mA(Peak)}$
Input voltage	$\pm 40\text{V (Max)}$
Relay rating	30V <sub>DC</sub> / 2A, 250V <sub>AC</sub> / 2A
Relay switching frequency	Max. 20 times/minute at rating load
Relay response time	ON $\rightarrow$ OFF: Max. 3ms, OFF $\rightarrow$ ON: Max. 6ms
Nominal voltage for relay	24V <sub>DC</sub>
Input impedance	4.7K $\Omega$
Input current	$\pm 10\text{mA(Max)}$ , $\pm 12.5\text{mA(Peak)}$
Input voltage	$\pm 40\text{V (Max)}$
LED indicator	Power, Link and I/O status
Power supply	22V to 26V <sub>DC</sub>
Operating temperature	0 to 60°C
Storage temperature	-20 to 80°C
Power consumption	1.8W
CE certificate	Ready

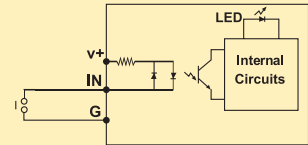
#### NPN Sinking type sensor Input



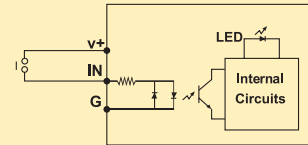
#### PNP Sourcing Type Sensor Input



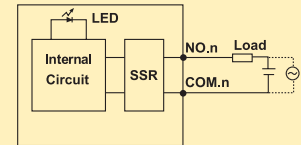
#### Dry Contact Input



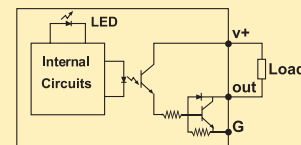
#### Wet Contact Input



#### Relay Output



#### NPN Sinking Output



#### PNP Sourcing Output

