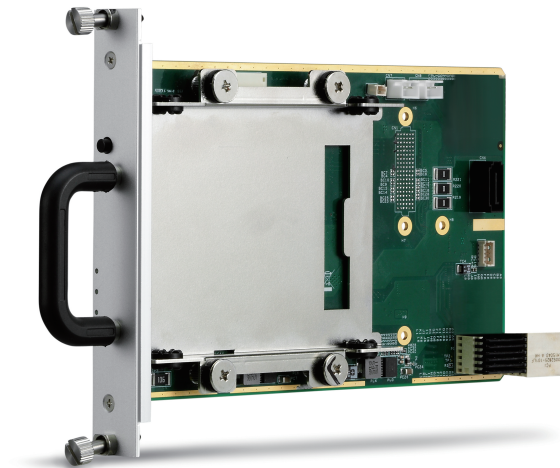


# 3U CompactPCI® Serial 2.5" SATA Storage Carrier Blade

## cPCI-A3H10

## Datasheet



### Features

- 3U 4HP CPCI-S.0 peripheral
- One 2.5" SATA 6Gb/s drive slot
- Status LEDs on faceplate: drive activity, hot-swap status, user-configurable
- Hot swap support
- Operating temperature: -40°C to 85°C with qualified component

### Specifications

General	Storage PICMG Standards	1x 2.5" SATA SSD 6Gb/s slot CompactPCI® Serial Rev 2.0
Front Panel Interfaces	LED	Three LEDs indicators for SATA SSD status
Backplane Interfaces	PCI Express	1x PCIe x4 Gen3 on P1
Electrical Specifications	Power Input	+12V
Mechanical & Environmental	Form Factor	3U 4HP 1-slot CompactPCI Serial blade 160mm x 100mm (LxW) Equipped with P1
	Weight	0.2g (without SSD)
	Operating Temp.	-40°C to +70°C with air cool
	Storage Temp.	-40°C to +85°C

### Ordering Information

cPCI-A3H10	3U CompactPCI Serial storage blade with 1x 2.5" SATA storage carrier
------------	--

